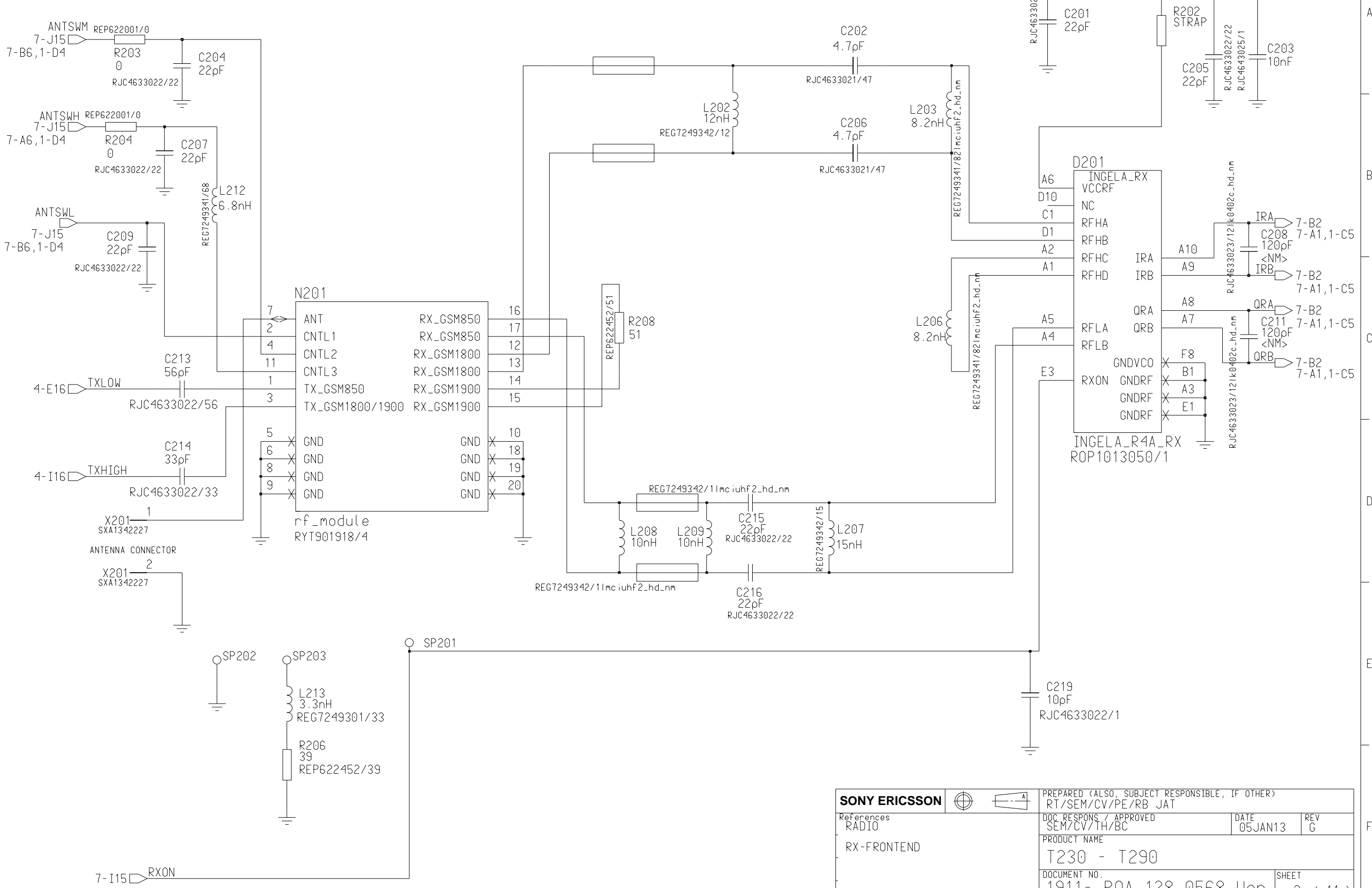


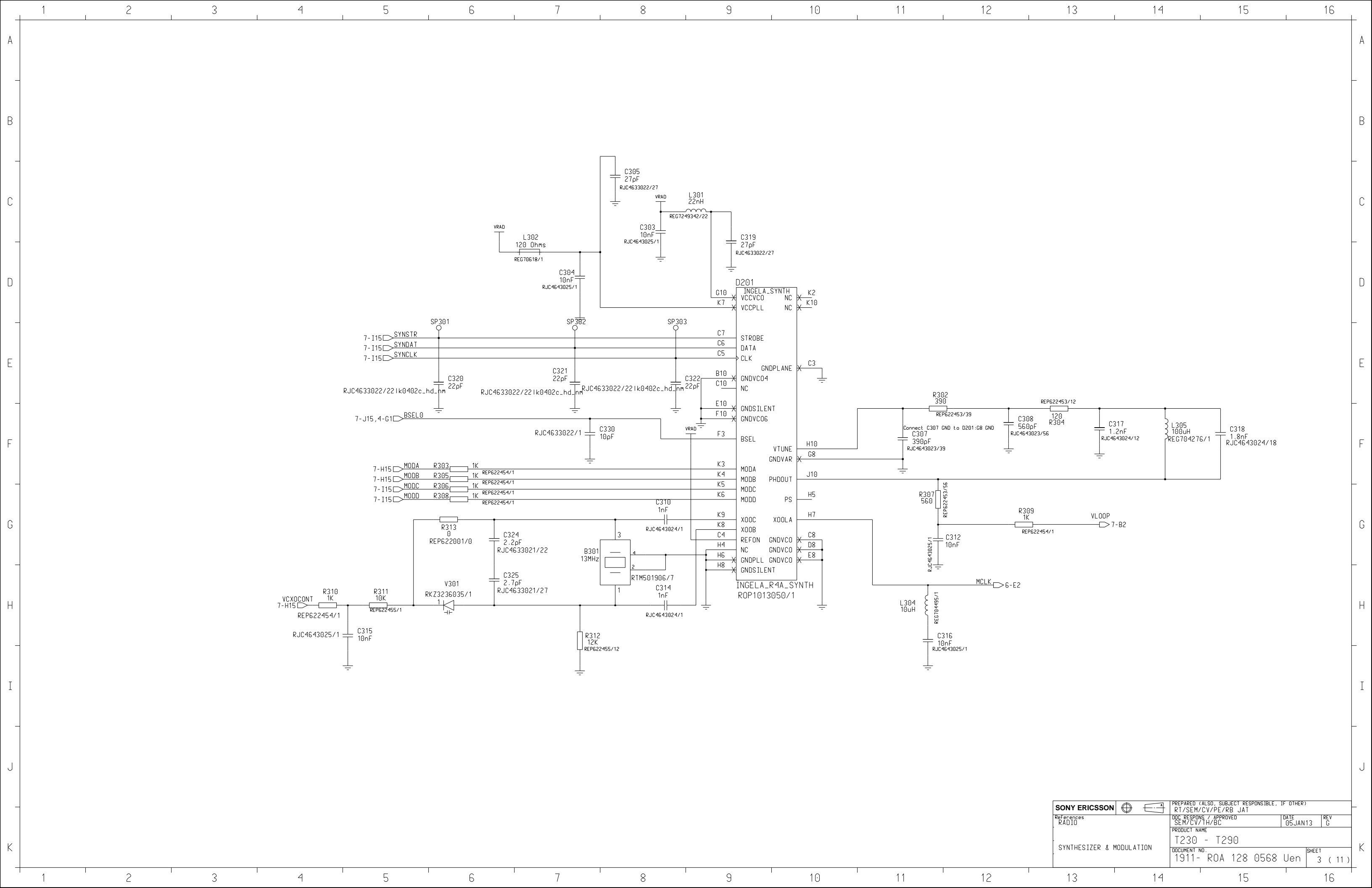
- 2. RX-FRONTEND
- 3. SYNTHESIZER AND MODULATION
- 4. POWER AMPLIFIER
- 5. POWER SUPPLY
- 6. MICROPROCESSOR AND MEMORY
- 7. ANALOG
- 8. POWER MANAGEMENT
- 9. PORTS AND EXTERNAL I/O
- 10. KEYBOARD, ILLUM & BUZZER
- 11. ANNA DSP

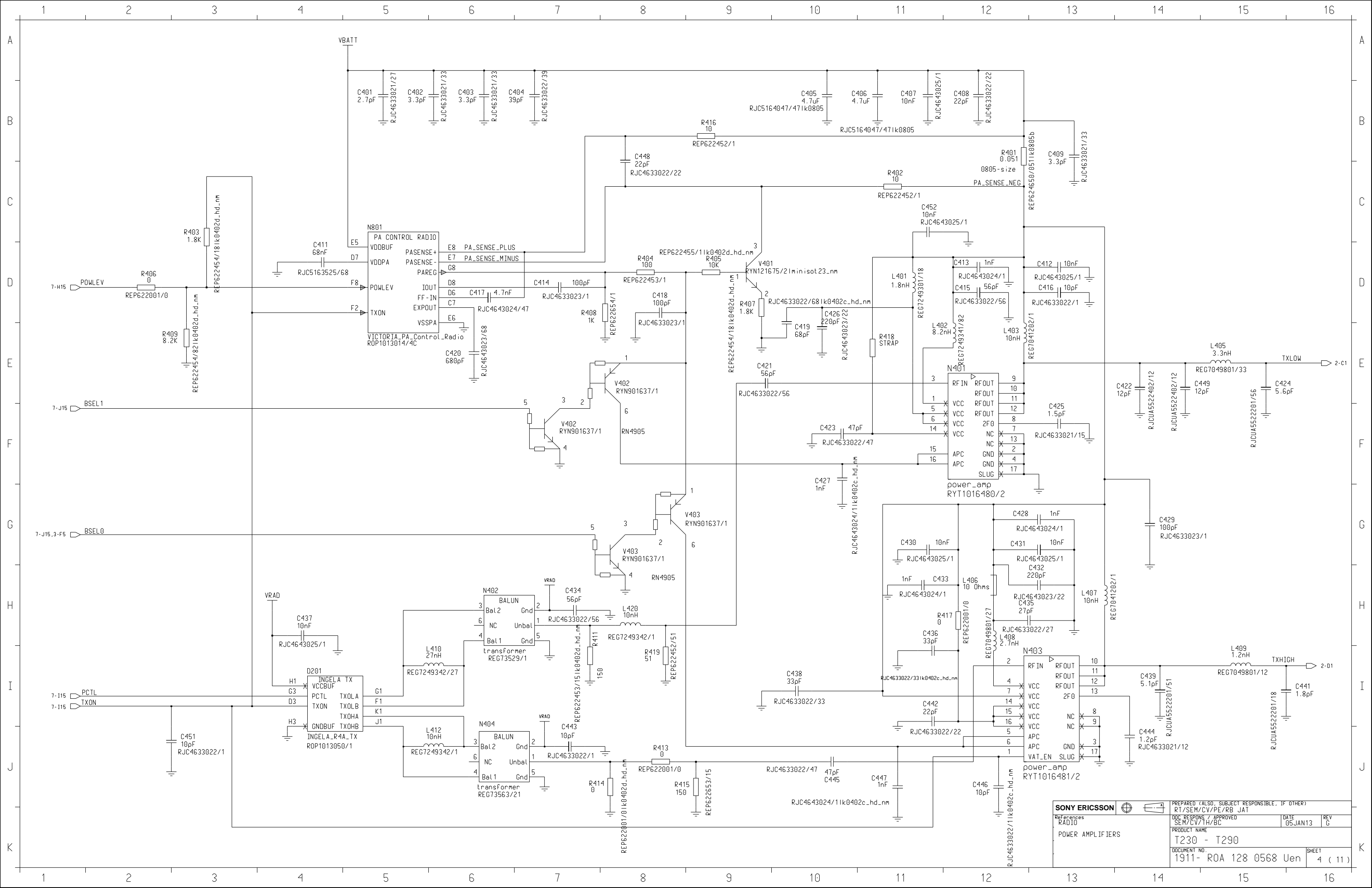
References	SONY ERICSSON		PREPARED (ALSO, SUBJECT RESPONSIBLE, IF OTHER) RT/SEM/CV/PE/RB JAT	
			DOC. RESPONS. / APPROVED SEM/CV/TH/BC	DATE 05JAN13
			PRODUCT NAME T230 - T290	REV G
			DOCUMENT NO. 1911- R0A 128 0568 Uen	SHEET 1 (11)

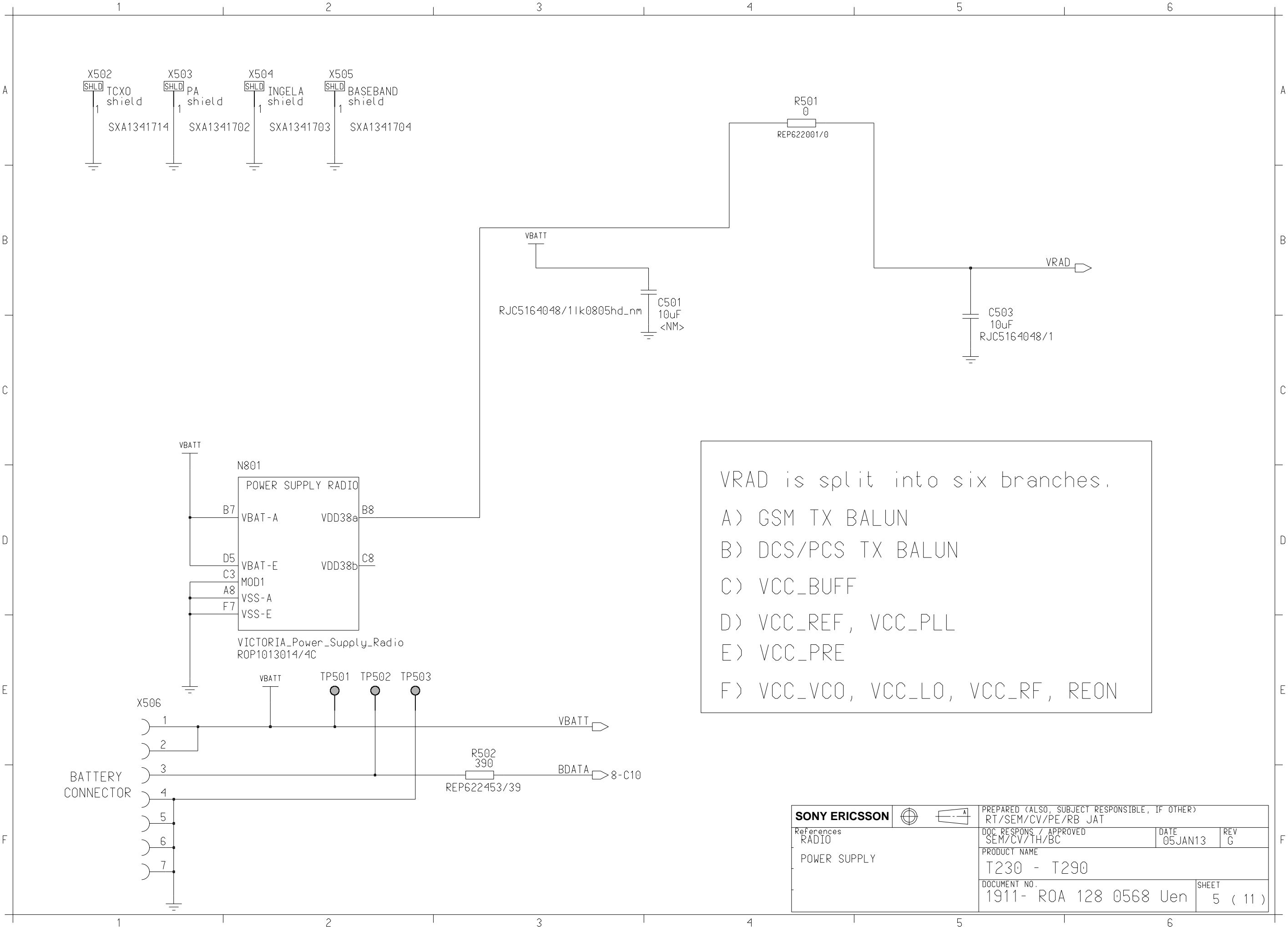
A
B
C
D
E
F

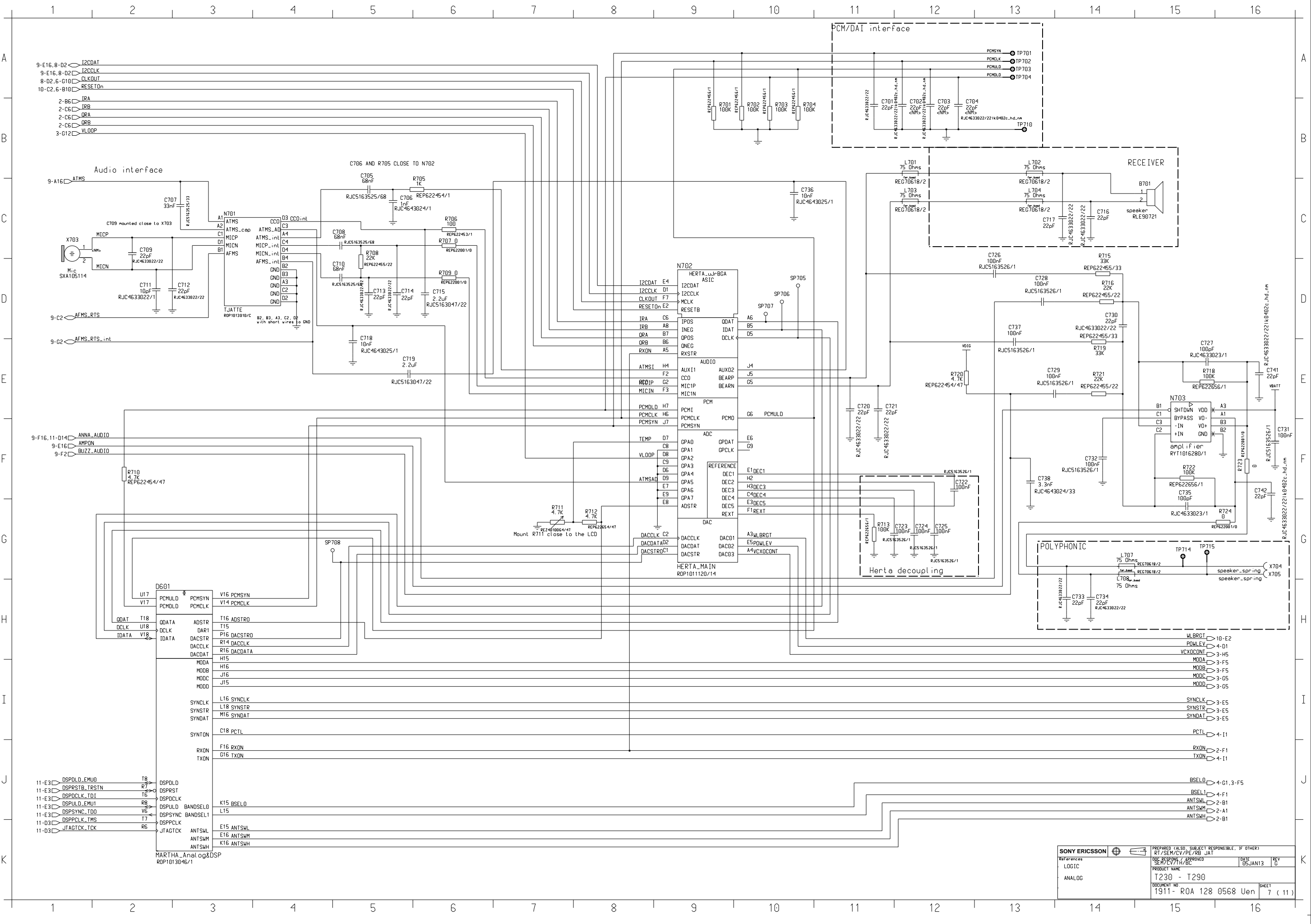


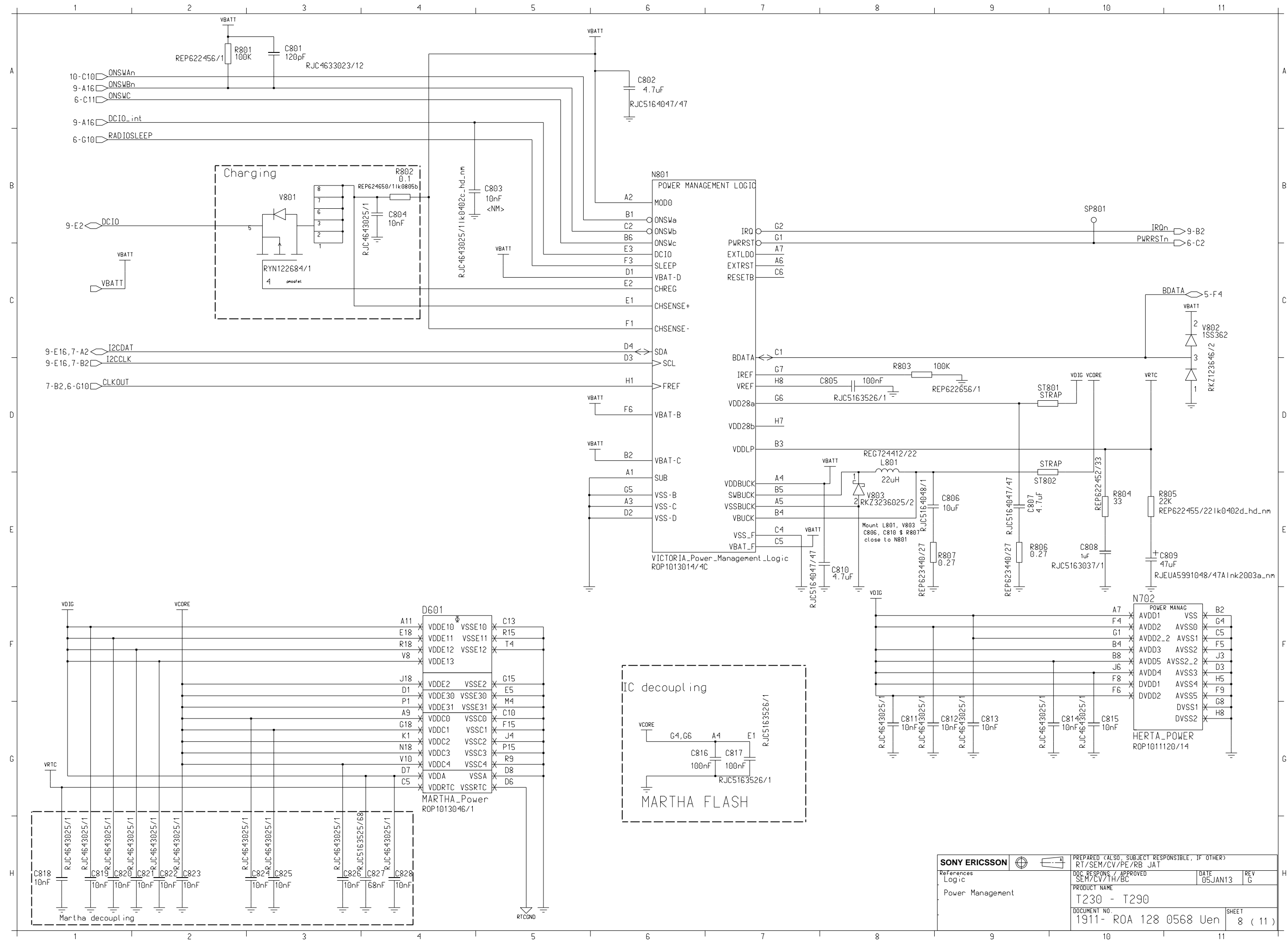
SONY ERICSSON		PREPARED (ALSO, SUBJECT RESPONSIBLE, IF OTHER) RT/SEM/CV/PE/RB JAT		
References RADIO RX-FRONTEND	DOC. RESPONS. / APPROVED SEM/CV/TH/BC		DATE 05JAN13	REV G
	PRODUCT NAME T230 - T290			
	DOCUMENT NO. 1911- ROA 128 0568 Uen			SHEET 2 (11)

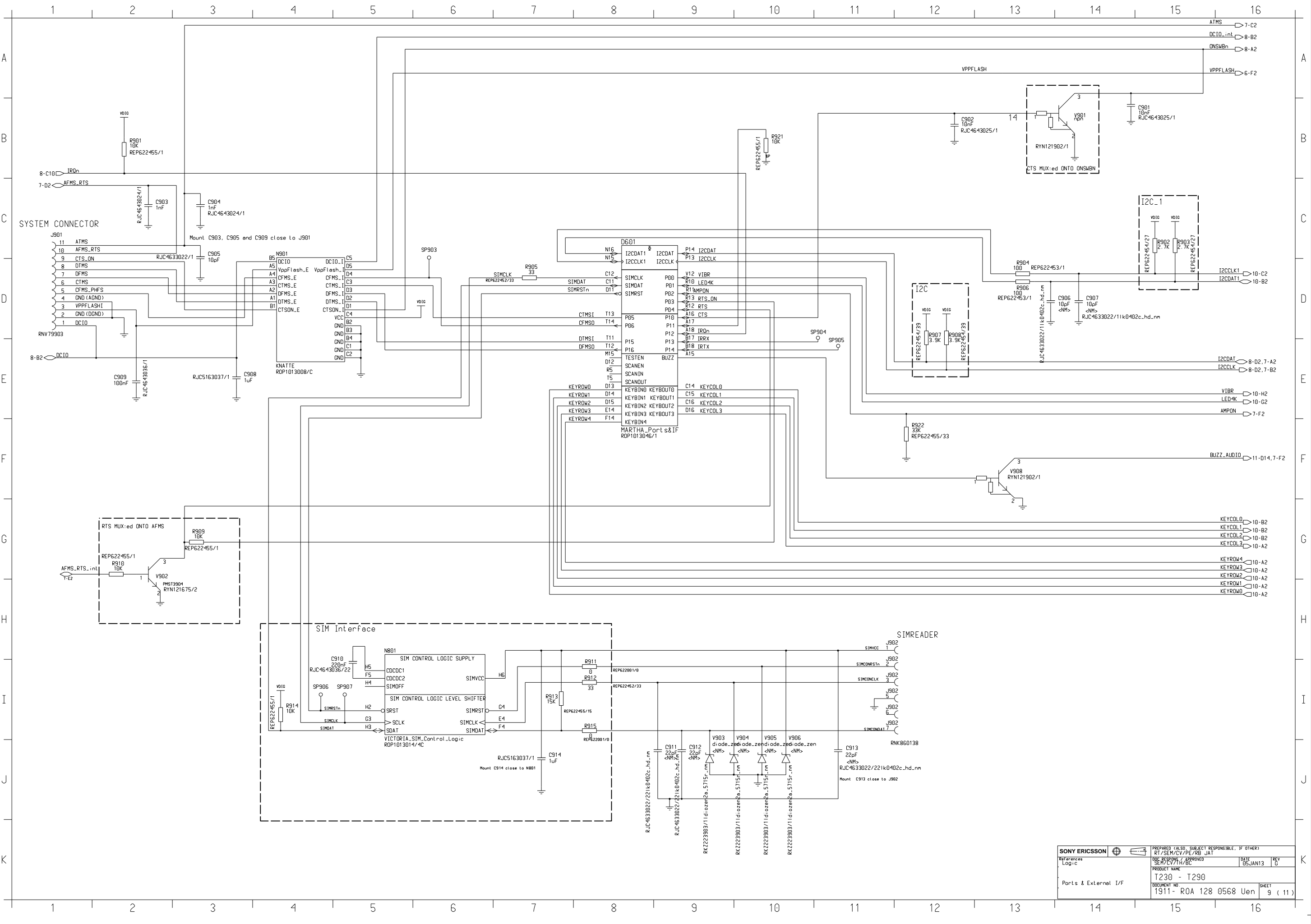












References Logic	PREPARED (ALSO SUBJECT RESPONSIBLE, IF OTHER)		
	RT/SEM/CM/PE/RB JAT		
	Doc. Revision / Approved	DATE	REV
	SEH/CV711A/BC	05JAN13	6
Ports & External I/F	PRODUCT NAME		
	T230 - T290		
	DOCUMENT NO		
1911- ROA 128 0568 Uen			SHEET
			9 (11)

